

# CONCREX® SUB ZERO

For essential floor repairs during the winter months



### AREAS OF USE

- Unheated areas, inside or outside
- Freezer and chiller room floors

### FEATURES

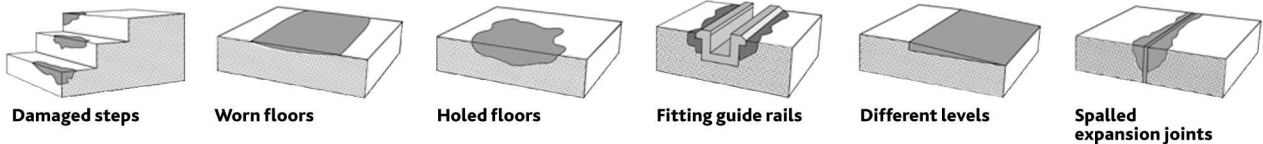
- Heavy duty polyaspartic resin repair mortar
- Exceptionally durable for heavy traffic areas
- Can be used at temperatures as low as -20°C
- Repairs can be feather-edged
- Chemical resistant and non-dusting
- Can be applied to concrete and metal

### DESCRIPTION

Watco Concrex® Sub Zero is an exceptionally strong polyaspartic based resin repair mortar. Suitable for essential repairs during the winter months in areas where the temperature could be as low as -20°C.

It is ideal for thin section repairs and feather-edge repairs which have to be undertaken in freezing conditions. Watco Concrex® Sub Zero incorporates polyaspartic technology, has excellent strength and chemical resistance and can be applied into cold areas where ordinary repair mortars would fail. It is ideal for repairs to any unheated area, internal or external and is suitable for application to concrete, metal and sand & cement.

### WHERE TO USE WATCO CONCREX® SUB ZERO



### SPECIFICATION

Composition	A polyaspartic based repair mortar comprising of a pigmented resin, clear curing agent and a blended aggregate.	Cleaning	When fully cured, proprietary detergents or degreasants may be used to clean the surface.
Colour	Mid grey.	Pot Life	30-60 minutes depending on temperature. If Concrex® Sub Zero is used past its working life, trowelling will become difficult and adhesion will be reduced.
Primer Required	Not usually – see section headed 'Priming'.	Cleaning Tools	Equipment used for mixing and applying should be wiped clean with white spirit or a similar solvent before the Concrex® Sub Zero cures.
Number of Components	3	Shelf Life	12 months in unopened containers.
Finish	Smooth, impervious surface.	Storage	Store at a temperature between 10°C and 30°C.
Usage Interior/ Exterior	Interior & exterior.	Chemical Resistance	Excellent resistance to spillages of many chemicals commonly used in industry, including (at 20°C) paraffin, petrol, fuel oils, alcohols, dilute nitric, sulphuric and hydrochloric acids, sugar solutions, oxalic acid, citric acid, caustic soda, salt solutions, cutting oils, mineral oils. Advice given regarding other chemicals.
Application Tools	Steel float or trowel.	Safety.	All product labels provide general safety information. Material Safety Data Sheets are available. Food products must be removed from the area during application and cure.
Suitable For	Concrete, sand & cement and metal.		
Pack Size	10kg		
Coverage	Approximately 1.2m <sup>2</sup> per 10kg at 5mm thick.		
Shrinkage (on cure)	Negligible.		
Damaged by Frost	No.		
Can be Feather-edged	Yes, around the edge of a repair – full strength at 5mm thick.		
Application Thickness	Up to 50mm for hole filling only. Do not use at more than 15mm for screeding, unless building up in layers.		
Curing Time	3 - 5 hours at 15°C. 12 - 16 hours at 0°C. 48 hours at -20°C. Full chemical resistance is achieved after 7 days.		

ALSO AVAILABLE IN THE CONCREX® RANGE



Concrex® Carbon Fibre



Concrex® Flex



Concrex® Cold Set



Concrex® Deep Fill



Concrex® Acid Strength



Concrex® Asphalt Repair



Concrex® Vertical



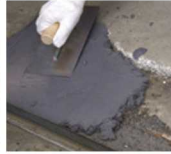
Concrex® Vertical Cold Set



Concrex® Colours



Concrex® Colours Cold Set



Concrex® Deep Fill Cold Set



Concrex® Coving Mortar



Concrex® Fine Filler

PREPARATION & APPLICATION

**PRIMING**

A primer is not usually required when filling holes in concrete floors or resurfacing rough or damaged concrete. Watco Tack Coat Sub Zero adhesive primer is recommended when using Watco Concrex® Sub Zero as a thin section screed over smooth surfaces. It is also recommended when repairing intricate/high impact areas such as broken floor joint edges and damaged step nosings.

**MIXING**

Wear protective gloves.

Each pack contains one tin of curing agent, one tin of resin and a blended aggregate.

Tip the blended aggregate onto a mixing board. Empty the contents of the small tin into the larger tin and mix together thoroughly.

Empty the mixed components onto the aggregate and mix using a trowel. The more thorough the mixing, the 'wetter', smoother and more manageable the mix becomes. Alternatively, you can knead the mixture by hand wearing suitable gloves.

It is important to mix thoroughly until you achieve a consistent colour.

**APPLICATION**

Trowel the mortar firmly into the repair and finish with a trowel or float. To get a good, smooth finish, regularly wipe the surface of the trowel with a cloth dampened with white spirit.

Watco Concrex® Sub Zero is normally applied at 5mm - 50mm thick, but repairs can be feather-edged if most of the repair is at least 5mm thick. For repairs deeper than 50mm apply in separate layers allowing each to cure before the next is applied.

**SAFETY**

A detailed Material Safety Data Sheet is available.



WATCO.CO.UK

Watco UK Limited, Eastgate Court, 195-205 High Street, Guildford, Surrey, GU1 3AW, UK Tel: 01483 418 418 Fax: 01483 428 888 www.watco.co.uk E-mail: sales@watco.co.uk