

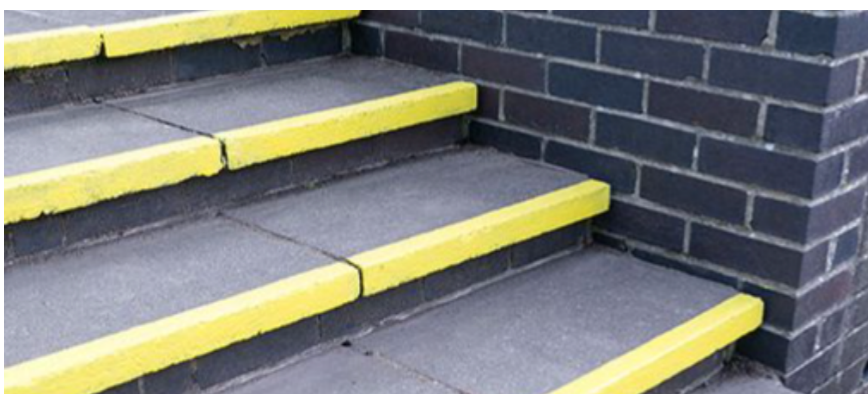
Stepmarker

A hard wearing, slip resistant coating for lines and step edges



Most paints are worn out very quickly by the regular foot traffic on step edges. This coating can be applied in a single, quick drying layer and is based on a two part epoxy for maximum abrasion resistance. Ordinarily, two part epoxy coatings have a very limited pot life (usable application life after mixing together the two components). Watco Stepmarker uses a technology that gives both a long pot life and a rapid cure time so that the painted step can be put back into service with the minimum of delay.

For a heavily textured anti slip surface on steps, please refer to fibreglass edging products such as Watco Firm Step Edge.



Colours



Yellow

Samples are available on request. While great care is taken with the colour samples shown, no guarantee can be given that they represent exactly the colour offered.

Areas of use:

- Step edges and loading bays
- Areas of heavy traffic

Features:

- Clearly highlights step edges and trip hazards
- Slip resistant and chemical resistant
- Can be used as low as 5°C
- Ready for foot traffic in 4 hours
- Easy to mix and apply

Need help? Speak to the experts

Our dedicated and professional team are here to help you get the best results for your project. They will talk you through the preparation and application stages when using **Stepmarker**.

Call our expert team on: **01483 418 418** (Weekdays 8:00am - 5:30pm. Saturday 9:00am - 12:00pm)



Stepmarker

A hard wearing, slip resistant coating for lines and step edges

1 Surface Preparation

All surfaces should be clean, dry, and free from oil and grease. Old stone surfaces may be extremely hard and shiny. Performance of Watco Stepmarker in these situations will be improved if the surface can be scarified first. If nothing else is available, vigorous use of a wire brush will assist. Concrete should be sound and free from laitance and dust. Timber should be hard, dry and free from oils. Abrasion is recommended. Not suitable for use on inherently oily timbers unless they are abraded thoroughly. Abrade steel to a bright surface before coating. Do not use a primer. Other metals should be clean and dry. Mask the area to be painted with masking tape.

2 Mixing

Add the entire contents of the curing agent (smaller tin) to the contents of the resin (larger tin) and mix thoroughly with a flat bladed tool until thoroughly blended and of a uniform consistency. Pay particular attention to the sides and bottom of the can. Pour into a paint kettle or tray before application.

3 Application

Do not apply at temperatures below 5°C. At surface temperatures below 10°C, the coating may stiffen during application but this will not affect performance. Apply by brush or roller to the prepared surface. Brush application usually reduces coverage but allows a thicker coating to be used. One good coat is usually sufficient.

4 Safety

Material Safety Data Sheets are available.

5 Vocs

EU limit for this product (Cat A/j): 500 g/L. Contains 415 g/L VOC

6 Ordering

Available direct from Watco UK Limited and through agents worldwide. All Watco products are sold subject to the Company's Standard Conditions of Sale.

The Company and its representatives are often asked to comment on potential uses of Watco products which differ from those described in the Company's data sheets. Whilst in such cases the Company and its representatives will always try to offer helpful and constructive advice, the Company cannot be held responsible for the results of such uses unless they are specifically confirmed in writing by Watco.

Stepmarker

A hard wearing, slip resistant coating for lines and step edges

Specification

Composition	A two part liquid applied product with a 'gritty' appearance.
Usage Interior/Exterior	Interior & exterior.
Number of Coats	One thick coat applied by brush is usually sufficient.
Suitable For	Concrete, brick, stone, sand & cement, old asphalt, wood and metals.
Pack Size	Supplied as a 1 litre pack, in two separate, clearly marked tins.
Coverage	1 litre will treat the edges of approximately 50 to 60 steps, 1 metre wide with a 50 mm band along the top edge. One coat is usually sufficient.
Curing times at 15°C	Touch dry within 1 hour, accepts foot traffic within 4 hours. Fully cured in 5 days. Lower temperatures may delay curing.
Overcoating	If a second coat is required, apply after approximately 1 hour.
Cleaning Tools	Splashes and equipment can be cleaned with a xylene based solvent such as Watco Cleaning Solvent TH99 before the product has set. Do not use water.
Shelf Life	12 months in unopened container.
Pot Life	Approximately 30 minutes at 20°C or 1 hour at 10°C.
Storage	Stored in cool, dry place. Store above 15°C for a few hours before use.
Safety	Flammable. See Safety Data Sheet & label for recommended precautions in use. Remove food products from the area during application and curing.
Principle Limitations	The durability of the marking will be improved by proper preparation. Do not apply in cold, damp conditions or when rainfall is imminent. Ensure that the chosen colour is a good contrast to the surrounding step. Contains volatile organic compounds with a pronounced odour; ensure adequate ventilation when applying this product.
Please contact us regarding applications not described here.	

Stepmarker

A hard wearing, slip resistant coating for lines and step edges

Test Results



Slip Resistance
BS7976-2

The Pendulum Test Value (PTV) is measured in wet conditions. A number above 36 indicates a 'low slip potential'.

High: 0-24 PTV
Moderate: 25-35 PTV
Low: 36+ PTV
66PTV – Anti Slip Liquid Roof Membrane



Chemical Resistance

Results shown are for tests with commonly used chemicals. Advice can be given for chemicals not listed here.

Petrol, diesel, fuel, methylated spirits, xylene, ammonia, white spirit, bleach, oil, anti-freeze, mineral hydraulic oil, caustic soda, detergents, sugar solutions.
At 5%: citric acid.