

# Epoxy Grip Strip

An attractive safety finish for steps, ramps and floors



Watco Epoxy Grip Strip is a highly effective and extremely versatile anti slip treatment. Simply spread black epoxy resin paste between two lines of self adhesive Epoxy Grip Strip Tape and sprinkle grit onto the paste. Remove the tape to leave a tough, black anti slip strip. We suggest one or more 15mm wide strips, 50mm apart. Strips of Epoxy Grip Strip can give a more attractive finish than a conventional coating.



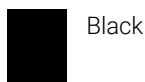
**Areas of use:**

- Internal and external steps
- Ramps, entrance ways and decking etc.
- Around machinery

**Features:**

- Smart, black epoxy resin strip with charcoal grey gritted surface
- Epoxy resin formula gives excellent adhesion to a variety of substrates
- Create any width or length of strip using the special tape as a guide
- An alternative to anti slip tape for a durable finish in heavy wear areas

**Colours**



## Need help? Speak to the experts

Our dedicated and professional team are here to help you get the best results for your project. They will talk you through the preparation and application stages when using **Epoxy Grip Strip**.

Call our expert team on: **01483 418 418** (Weekdays 8:00am - 5:30pm. Saturday 9:00am - 12:00pm)



# Epoxy Grip Strip

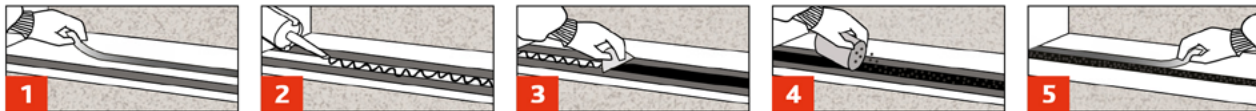
An attractive safety finish for steps, ramps and floors

## 1 Surface Preparation

Ensure surfaces are clean and dry. Do not apply to cold (less than 10°C) or damp substrates.

## 2 Application

Please refer to the diagrams below. Do not mix the epoxy resin paste until you are ready to use it as it must be applied immediately after mixing.



1 Lay the tapes down the desired width apart.

2 Apply the paste evenly between the tapes.

3 Smooth down the paste using the spreader.

4 Sprinkle grit over the pasted area.

5 Carefully remove the tape before the product cures.

## 3 Mixing

Pour the curing agent into the tin of resin and mix thoroughly using a palette knife or similar. Scrape down the sides and bottom of the tin during mixing to avoid unblended resin/curing agent creating soft spots. Once mixed, pour into the cartridge supplied and close the open end with the plunger. Place the cartridge into the skeleton gun and fit the nozzle once the end has been cut off.

## 4 Safety

All product labels provide general safety information. Material Safety Data Sheets are available.

## 5 Ordering

Available direct from Watco UK Limited and through agents worldwide. All Watco products are sold subject to the Company's Standard Conditions of Sale.

The Company and its representatives are often asked to comment on potential uses of Watco products which differ from those described in the Company's data sheets. Whilst in such cases the Company and its representatives will always try to offer helpful and constructive advice, the Company cannot be held responsible for the results of such uses unless they are specifically confirmed in writing by Watco.

# Epoxy Grip Strip

An attractive safety finish for steps,  
ramps and floors

## Specification

<b>Composition</b>	100% solids epoxy resin based paste with charcoal grey carborundum grit.
<b>Number of Components</b>	1 x resin, 1 x curing agent, 1 x empty cartridge, 1 x cartridge nozzle, 1 x spreader, 500g anti slip grit.
<b>Usage Interior/Exterior</b>	Exterior & Interior.
<b>Application Tools</b>	Skeleton gun, Epoxy Grip Strip Tape.
<b>Suitable For</b>	Concrete, wood, tiles, marble and other hard or painted surfaces.
<b>Pack Size</b>	310ml cartridge kit
<b>Shelf Life</b>	24 months in unopened containers.
<b>Coverage</b>	One cartridge will provide a line approximately 10m long x 15mm wide when applied to a smooth substrate.
<b>Curing Time</b>	Generally cured to receive traffic after approximately 16 hours at 15°C - 20°C. Curing time will be extended by lower temperatures. Do not use below 10°C.
<b>Pot Life</b>	Approximately 20 minutes at 20°C. Unused material can become hot if left in the cartridge.
<b>Storage</b>	Store at a temperature range of approximately 15°C - 25°C for at least 8 hours prior to use.
<b>Safety</b>	Material Safety Data Sheets are available. Food products must be removed from the area during application and cure.